

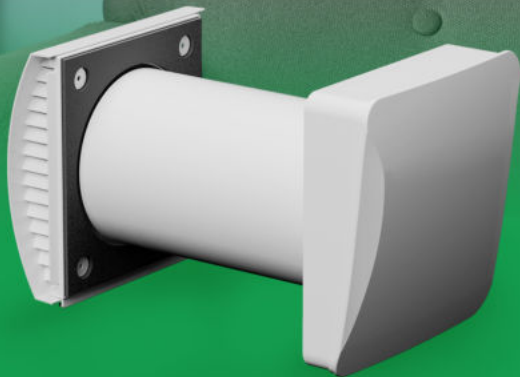


**AIR GO**

**SINGLE ROOM**

# ENERGY RECOVERY VENTILATOR

- ✓ *Improve indoor air quality*
- ✓ *Save indoor energy*
- ✓ *Improve sleep quality*
- ✓ *Bring down CO<sub>2</sub>*
- ✓ *Exhaust humidity*
- ✓ *Quiet operation*



**97%** up to  
Regeneration Efficiency

Suitable for  
**10~20 m<sup>2</sup>**  
rooms

- Elegant decorative front panel
- ↻ Reversible fan with low energy consumption
- ☰ Auto shutter to prevent air back drafting
- ➔ Installation can be done internally
- 📶 Wireless pairing operation function optional

- 🔊 Silent operation
- ☀️ Mold prevention
- 💧 Humidity control
- 📏 F7 [MERV 13] filter optional
- 📶 WIFI function optional



## REVERSIBLE DC FAN

The reversible DC duct fan is characterised by its low power consumption and silent operation. The fan motor features built-in thermal protection and ball bearings for a long lifespan.



## AUTO SHUTTER

Auto shutter can prevent the insects entering and the cold air flowing backward when the unit stops. It's top air outlet for uniform air supply.



## HIGH EFFICIENCY ENERGY REGENERATOR

The high-tech ceramic energy accumulator with a regeneration efficiency of **up to 97%** ensures heat recovery from the exhaust air to heat or cool the supply air flow.

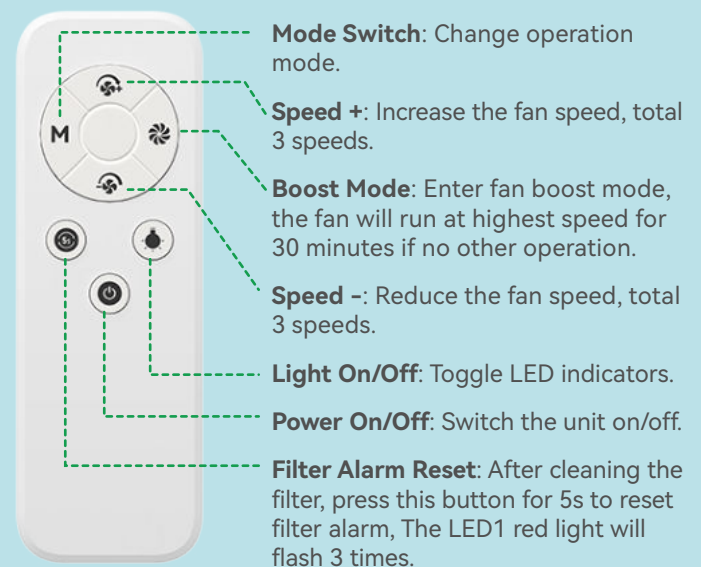
The ceramic regenerator is treated with an antibacterial composition to prevent bacterial growth inside. Both honeycomb type and heat storage ball regenerator are optional.



## LED Display



## Remote Control



## TECHNICAL PARAMETERS

Voltage	100V-240V AC /50-60Hz	Max RPM	2200
Air Flow in Supply/Exhaust Mode (L/M/H) (CMH)*	20/43/60	Regeneration Efficiency (%)	≤97
Air Flow in Supply/Exhaust Mode (L/M/H) (CFM)*	11.8/25.3/35.3	SEC Class	A+
Air Flow in Regeneration Mode (L/M/H) (CMH)*	10/21.5/30	Diameter of Duct (mm)	158
Air Flow in Regeneration Mode (L/M/H) (CFM)*	5.9/12.7/17.6	Product Size (mm)	230×243×499.7 (The length of duct in wall is 280-470 mm)
Max Airflow (under fan boost mode) (CMH)*	70	Weight (kg)	4.2
Max Airflow (under fan boost mode) (CFM)*	41.2		
Input Power (L/M/H) (W)	6.3/7.2/8.2		
Sound pressure level dB(A)	18.9/25.2/28.7		

**Note:** If the wall thickness is not within 280-470mm, please contact our sales to customize the length of duct.

The airflow in supply/exhaust mode with F7 filter is about 18/40/50CMH or 10.5/23.5/29.4 CFM, and the relative parameters will be adjusted accordingly.